



WiiPresenter

Simplify your Microsoft® PowerPoint presentation with a Nintendo® WiiMote™

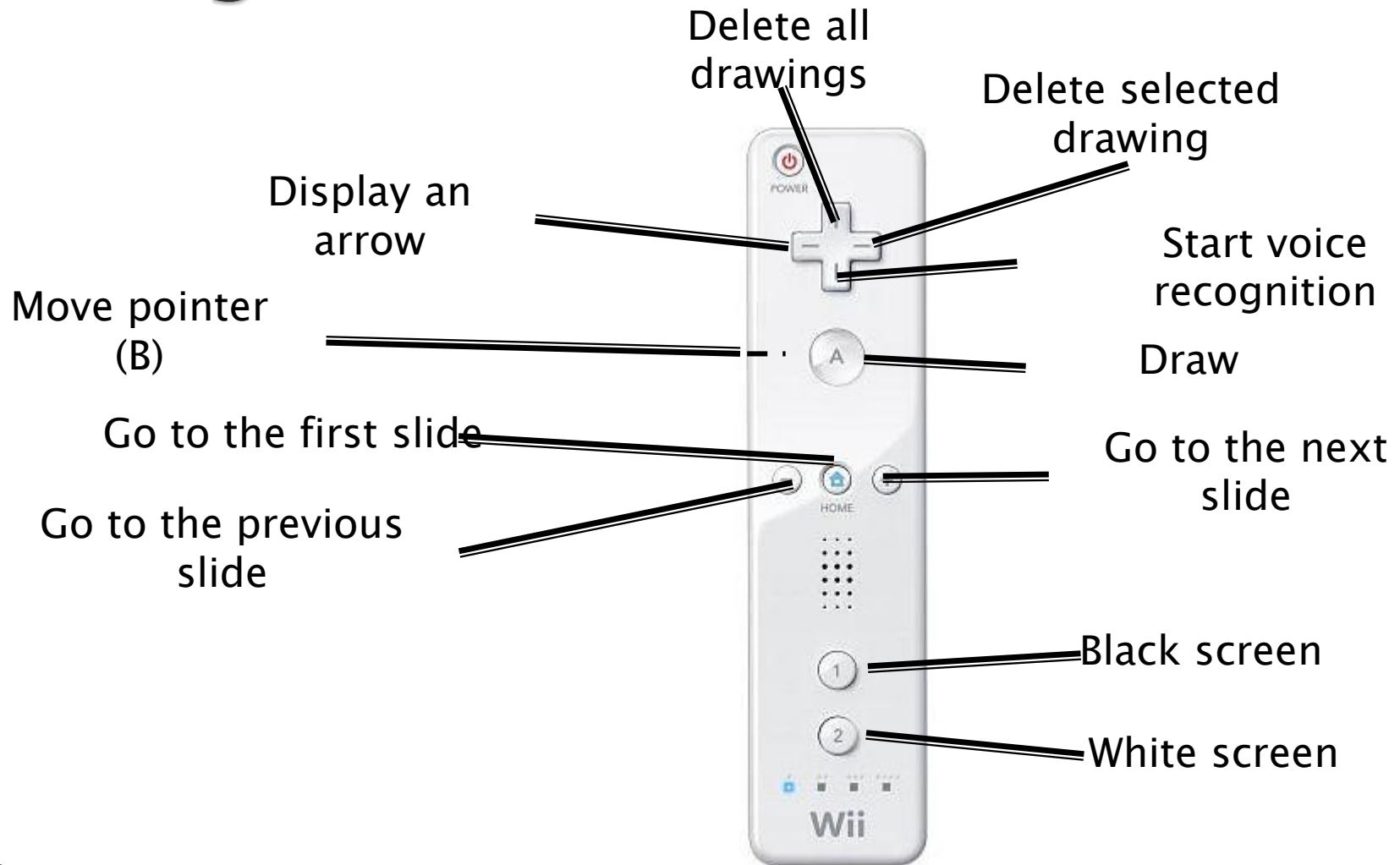
Introduction

- ▶ Context of the project
- ▶ Designated users

What can the « Wii » do?

- ▶ Navigate the presentation
 - Next, previous, first
- ▶ Draw with a red pointer
- ▶ Delete drawings
- ▶ Hide slides with a black or white screen

Using the WiiMote



Using the voice recognition

- ▶ Navigate the presentation
 - Next (“next slide”)
 - Previous (“back slide”)
 - First (“first slide”)
 - Finish (“end show”)
- ▶ Other commands
 - Black screen (“black screen”)
 - white screen (“white screen”)

CASE

- ▶ Synergistic
 - Press a button to use voice recognition
- ▶ Exclusive
 - Tasks can be completed using only one modality.

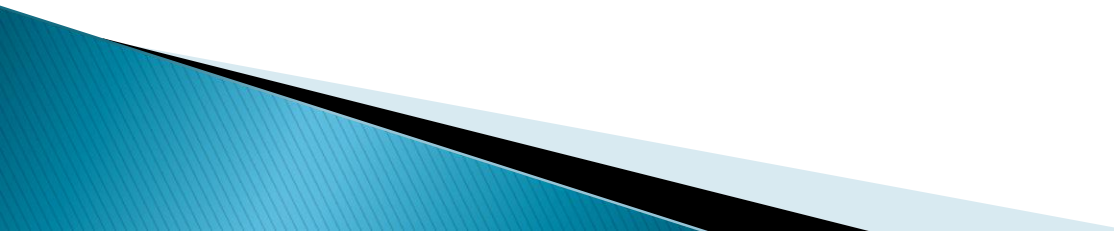
CARE

- ▶ Redundancy, using the voice recognition and the WiiMote for:
 - Slide navigation
 - Show/Hide the presentation
- ▶ Equivalence
 - Slide navigation

Used technologies

- ▶ **Wii**
 - WiiMote and Wii sensor bar
- ▶ **GlovePIE**
 - Voice recognition and WiiMote handling
 - Interprets numerous input devices
 - Script interpreter
 - Simulates keyboard interaction

Limitations

- ▶ Only works with French and German PowerPoint versions
 - ▶ Limited to keyboard shortcuts
 - ▶ Voice recognition has to be activated with a key
- 

Demo

- ▶ What is the final product capable of?
 - A short video

Conclusion

- ▶ Voice recognition is error-prone
- ▶ Easy to use
- ▶ Closely tied to PowerPoint